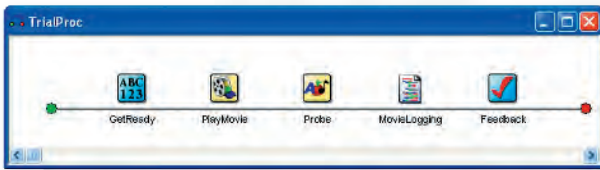




The Most Comprehensive Software Available for Behavioral Research

What is E-Prime®?

E-Prime is a suite of applications used to design, generate, and run computerized behavioral experiments. Build your own experiments using E-Prime's graphical interface. Collect, edit and analyze data – all within a few hours! Present stimuli and collect responses with millisecond precision.



Make the Right Choice with E-Prime® Professional

Extends E-Prime® 2.0 Standard to offer enhanced capabilities for more sophisticated designs

E-Prime® 2.0 Professional builds upon the new features included in E-Prime® 2.0 Standard to offer enhanced features:

- Present stimuli on multiple monitors simultaneously
- Play multiple movies simultaneously
- Improved productivity tools to test and debug (AutoAnswer, Experiment Advisor scripting aides)
- Set experiment-wide object properties and defaults
- Multiple correct answers
- Create custom libraries of shared functions through package files
- Network concurrent licenses

What's new for 2.0?

- Enhanced graphical interface
- Ability to play digital movies as stimuli (MPEG, AVI, WMV)
- Copy & paste objects between experiments
- Digital recording of participant vocalizations
- Increased display speed for bitmap transfers
- Support for additional image formats
- Improved options for network or ghosting installations
- Support for presentation of stimuli on multiple video displays
- Display stimuli on any attached monitor
- Improved audio support
- Support for UNICODE and international fonts
- Support for new devices (Joystick, Parallel Port Device, Network Socket Device)
- Expanded support for larger scripts
- Improved documentation and indexing of online Help
- A comprehensive scripting language
- Professional version with additional capabilities

NOW AVAILABLE!

E-Prime® 2.0 Standard & E-Prime® 2.0 Professional

To obtain your quote contact us at sales@pstnet.com



錫昌科技股份有限公司

新北市新店區寶中路113巷3號3樓
Tel: 02-29115233 Fax: 02-29116855

PSYCHOLOGY SOFTWARE TOOLS
Solutions for Research, Assessment, and Education
311 23rd Street Extension Suite 200
Sharpsburg, PA 15215-2821 USA
Phone: 412.449.0078
Fax: 412.449.0079
E-mail: sales@pstnet.com
Web: www.pstnet.com



E-Prime® Options

The listed options are provided in US.

Single Licensing Options:

- E-Prime 2.0 Standard
- E-Prime 2.0 Professional
- E-Prime 2.0 Run-Time License

Network Licensing Options:

- Network License
(10 seat min.)

Upgrades:*

- E-Prime 1.x to E-Prime 2.0 Standard
- E-Prime 1.x/2.0 Standard to E-Prime 2.0 Professional

- Multi-Pack to Network License
- Site License to Network License

*Requires previous purchase of a full E-Prime® system. A valid E-Prime® serial number must be provided at the time of purchase. An E-Prime® license key is also required for installation.



What operating systems support E-Prime®?

E-Prime is compatible PCs running Microsoft Windows® XP SP3 32-bit/Vista SP1 32 and 64-bit/7 SP1 32 and 64-bit

What are the minimum and recommended machine requirements for E-Prime®?

Minimum

- Pentium 4 Processor 1.8 GHz
- 512MB RAM
- DirectX™ video card
- USB Port

Recommended

- Pentium Dual-Core or Multi-Core Processor 2GHz or higher
- 1024MB RAM or higher
- DirectX™ video card with 128MB RAM or higher
- Sound hardware as recommended*
- CD-ROM
- USB Port
- Serial Port**
- Internet connection

*Please see sound hardware recommendations in the E-Prime Knowledge Base on our website, article 1307.

**Serial Port or Compatible USB to Serial Converter is required for use with the PST Serial Response Box

Can I install E-Prime® 2.0 if I currently have E-Prime® 1.x installed?

Yes. E-Prime 2.0 will support what is known as a “side-by-side” installation where both E-Prime 1.x and E-Prime 2.0 can be on the system at the same time. Experiment files can be upgraded from E-Prime 1.x to E-Prime 2.0, but once converted to the E-Prime 2.0 format (.es2), the experiments cannot be accessed through the E-Prime 1.x system. When converting experiments, E-Prime 2.0 will copy your original E-Prime 1.x file (.es) so that you can continue to access the original in E-Prime 1.x.

Will E-Prime® 1.x experiments be compatible with E-Prime® 2.0?

Yes. Most E-Prime 1.x experiments will upgrade into E-Prime 2.0 without error or significant modifications. Once an experiment is upgraded into E-Prime 2.0 (.es2) it will no longer be accessible in E-Prime 1.x (.es). Experiments created or upgraded to E-Prime 2.0 will have the file extension .es2, whereas experiments created in E-Prime 1.x will have the .es file extension.



錫昌科技股份有限公司
新北市新店區寶中路113巷3號3樓
Tel: 02-29115233 Fax: 02-29116855



PSYCHOLOGY SOFTWARE TOOLS
Solutions for Research, Assessment, and Education

311 23rd Street Extension
Suite 200
Sharpsburg, PA 15215-2821
USA

Phone: 412.449.0078
Fax: 412.449.0079
E-mail: sales@pstnet.com
Web: www.pstnet.com